

ADVANCED MATH CHOICE BOARD 4/27-5/1

Standard for the week: 2.MD.7

Complete 5 of the following activities throughout the week. Let your teacher know which activities you complete. **The graded assignment will be the "Crack the Code" Activity.**

MUST DO on MONDAY: Watch the video Telling Time to the Nearest 5 minutes on an Analog Clock.

All resources referenced can be found in the OneDrive folder: https://fultonk12-my.sharepoint.com/:f:/g/personal/lawrencemp_fultonschools_org/EuTVPk0ZjXFMpT0y6qJWYTcBdKBSY_RKkOP-5K6lKfxY3Q?e=7JMITr

Make your own clock using the resource below (or out of materials at home!) and practice telling time to the nearest 5 minutes.	Play an online time game.	Complete extra iReady lessons.	Watch the Brainpopjr. Time to the Minute and take the easy quiz (and hard quiz if you want a challenge!)
Play the "What Does the Clock Say?" Scoot Game	Create a schedule for your day using time to the nearest five minutes.	Complete the "Telling Time to the Nearest 5 Minutes" assignment.	Print (or draw your own board) and play the "Telling Time Bingo" game with someone in your family.
Complete the "Telling Time Task Cards."	Print and complete the "Fishie Friends" Activity.	Complete the "Clock Puzzlers Part 1."	Complete "Clock Puzzlers Part 2."
Graded Assignment: Complete the "Crack the Code" Activity.	Solve the "Telling Time Joke."	Complete the "Bunny Time" Activity.	Have someone in your family call out times for you to write using the "Telling Time Practice" Sheet.

RESOURCES:

Telling Time to the Nearest 5 Minutes on an Analog Clock: <https://www.youtube.com/watch?v=Nz7CCzAypc>

Brainpopjr. Time to the Minute: <https://jr.brainpop.com/math/time/timetotheminute/>

Telling Time Song for Kids: <https://www.youtube.com/watch?v=h6RNkQ7IU8Y>

ONLINE GAMES:

https://www.abcya.com/games/telling_time

<https://www.splashlearn.com/time-games-for-2nd-graders>

<https://www.mathgames.com/time> (Grade 2)

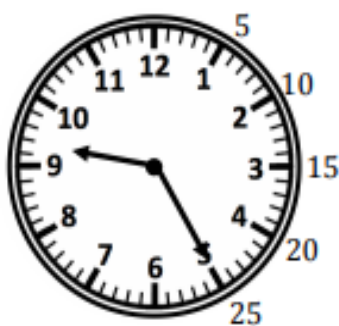
<https://mrnussbaum.com/clockworks-online-game>

<https://www.roomrecess.com/mobile/TimeTeller/play.html> (good for an iPad)

Once Upon a Time

Telling time in two easy steps:

- Look at the two hours that the hour hand (*short hand*) is between and see which hour has just past. That's the hour.
- Look at the minute hand (*long hand*) and count by 5s. Those are your minutes.



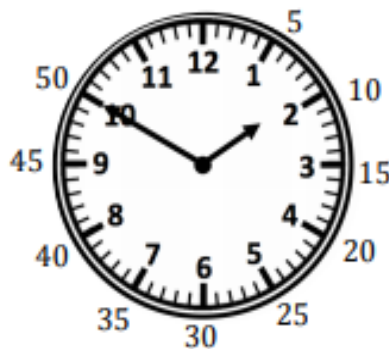
Time → 9:25

- The hour hand is between the 9 and the 10, so the time is after **9:00** but not 10:00 yet.

- The minute hand is pointing at the 5, so 5 sets of 5 minutes, or **25 minutes**, have past.



The hour hand is pointing between the 9 and the 10, but is it closer to one of those numbers? Why is it closer to *that* number?



Time → 1:50

- The hour hand is between the 1 and the 2, so the time is after **1:00** but not 2:00 yet.

- The minute hand is pointing at the 10, so 10 sets of 5 minutes, or **50 minutes** have past.



The hour hand is pointing between the 1 and the 2, but is it closer to one of those numbers? Why is it closer to *that* number?



Now it's your turn to try!

What times do *these* clocks show?



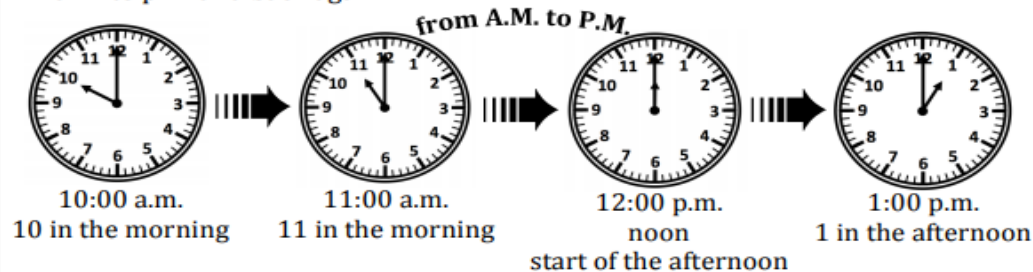
Morning, Noon, and (Mid)Night

Every time – 2:30, 1:45, 11:15, etc. – happens twice a day, once as an A.M. time and once as a P.M. time.

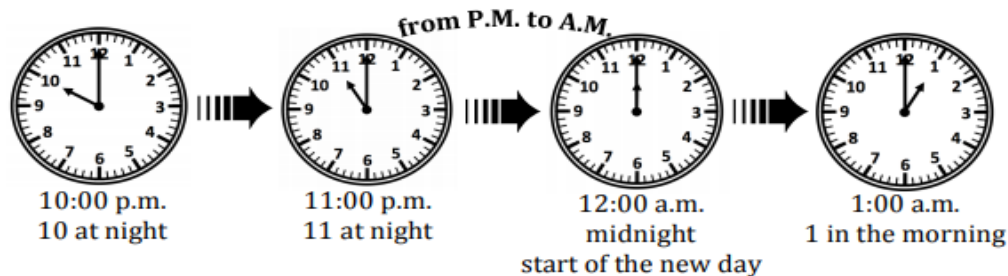
Let's look at the movement from a.m. to p.m. and back again:



The abbreviations a.m. and p.m. come from phrases in the ancient language, Latin. A.M. is short for *ante meridian*, which means "before noon". P.M. is short for *post meridian*, which means "after noon".



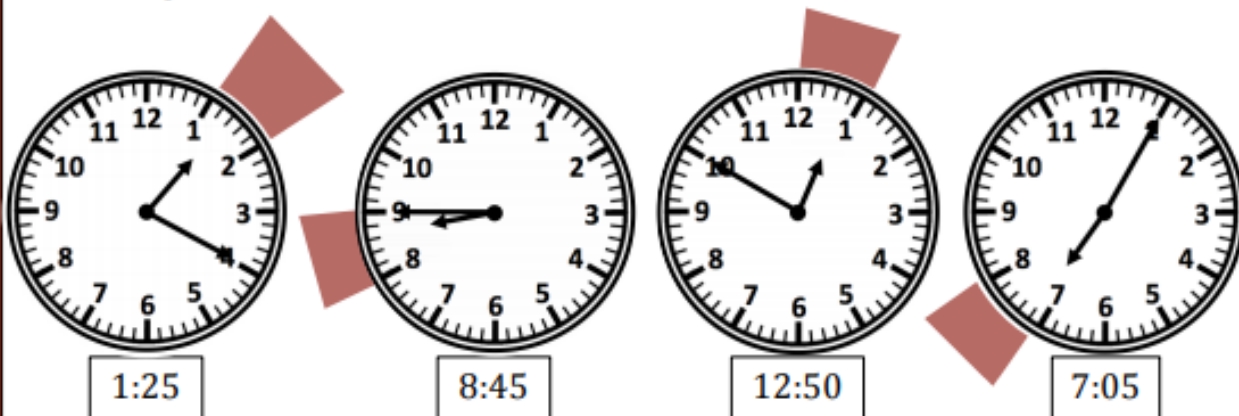
What are you normally doing at 11:00 a.m.? How about at 1:00 p.m.?



What are people normally doing when times switch from p.m. times to a.m. times?

Hour After Hour

The clocks show the times 1:25, 8:45, 12:50, and 7:05. Look at the hour hand (small hand) on each clock. What two numbers does the hour hand fall between?



? Which number is each hour hand closer to? Why is the hour hand closer to *that* number?

Can you think of a time where the hour hand is the same distance from *both* numbers?

make a clock

Directions

1. Print
2. color and cut out
3. Glue numbers in place
4. Attach clock hands using a brad



1	2	3
4	5	6
7	8	9
10	11	12

